



## Data Backup and Recovery in Virtual Environments

SEP sesam is a standardized and high performant data availability solution for heterogeneous and cross platform IT environments of any size - it is one enterprise-wide backup and disaster recovery solution.



SEP sesam is certified for virtualization solutions and reliably secures virtual machines - ready for a complete recovery.

The clear illustration of the virtual infrastructure and the virtual machines makes planning and conversion of automatic backup processes easy. The protection of virtual environments is fully integrated in the SEP sesam Management Interface.

## SEP sesam Citrix XenServer Online Backup Module

The SEP sesam Citrix XenServer Extension offers Disaster Recovery and functionality for Citrix VMs, which has been previously unavailable in the marketplace.

The precise depiction of the XenServer infrastructure is displayed in the management interface showing available virtual guest systems simplifying planning and execution of automated backup processes. No additional effort is required to backup and protect any XenServer environment.

By implementing SEP sesam, companies realize savings in operation expenses, time and manpower.

# SEP sesam

## Citrix XenServer Online Backup

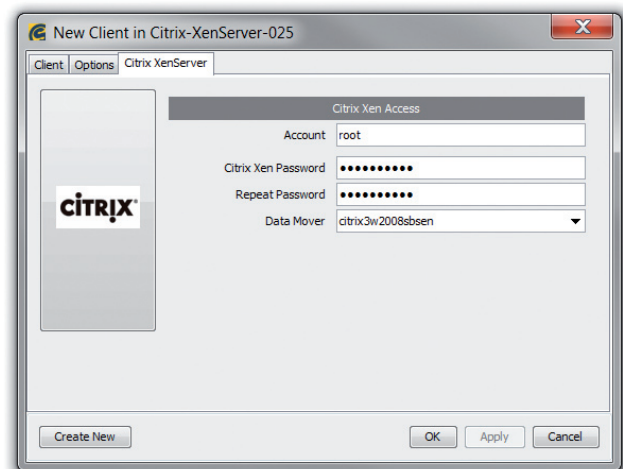
### Key Features

Easy Access Technology (Agent-less)	✓
Backup Environment Integration	✓
Management Interface Integration	✓
Solves Activation Loss	✓
Open File Backup	✓
Windows VSS Snapshots	✓
Encryption	✓
Verified for Citrix XenServer & XenDesktop & Xen Apps	✓
Physical Server to Virtual Server Converting (P2V)*	✓
Disaster Recovery on VMs	all Operating Systems
Backup Methods	Offline Backup, Online Live Memory Backup, Online Quiesced Backup, Online Normal Backup
Backup Types	Full
Granularity	Image-Level
Supported Platforms	<input type="checkbox"/> XenServer 5.6 , 6.0

\* using SEP sesam BSR for Windows (SEP Disaster Recovery Solution)

### Agent-less access (Easy Access Technology)

The SEP sesam server is able to communicate natively with the XenServer environment, eliminating the requirement for a backup agent to be installed on the hypervisor. This optimizes performance for backups and reduces the need to communicate with agents on the guest Virtual Machines for full system backups.



© 03/2011 SEP AG. All rights reserved. The contained information can be changed without previous announcement.



SEP AG, Ziegelstrasse 1, 83629 Weyarn, Germany, +49 8020 180-0  
 NORTH AMERICA | SEP Software Inc., 94 Benthaven Place, Suite 100, Boulder, CO 80305, USA, +1-303-417-6316  
 FOR FURTHER INFORMATION, VISIT [www.sep.de](http://www.sep.de) / [www.sepssoftware.com](http://www.sepssoftware.com)